



factsheet

Viridor Laing (Greater Manchester) Ltd

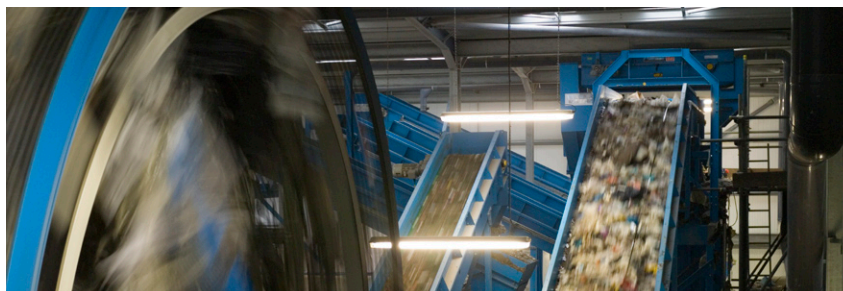
In April 2009 Greater Manchester Waste Disposal Authority (GMWDA) and Viridor Laing (Greater Manchester) Ltd (VLGM) signed a £3.8bn contract - Europe's largest ever waste management Private Finance Initiative (PFI) - that will enable the Authority to achieve its vision of providing a world-class solution for our waste.

Working together



Viridor Laing (Greater Manchester) Ltd is a consortium made up of Viridor Waste Management Ltd, a leading UK waste management and recycling company which currently handles nine million tonnes of waste per year, and John Laing plc, a leading investor, developer and operator of privately financed public sector infrastructure projects.

GMWDA is the largest of the English waste disposal authorities, providing services for more than 970,000 households across nine Districts: Bolton, Bury, Manchester City, Oldham, Rochdale, Salford, Stockport, Tameside and Trafford.



Our targets



- A recycling and composting rate of 33% for 2010
- A recycling and composting rate of 50% for 2020
- Meeting the following - and intermediate - LATS targets: 2009/10, 2012/13 and 2019/20
- Stabilising waste growth to 1% per annum by 2010
- Reducing waste growth to 0% per annum by 2020

The signing of the contract heralds the beginning of an enormous and exciting construction programme to create a network of state-of-the-art waste and recycling facilities across the Greater Manchester area, creating over 5,000 jobs in the process.

It will take about four years before all the new infrastructure is up and running. During this time, the consortium will be responsible for various activities including: design and planning, building, financing, operations/maintenance and communications.





Proposed technologies and facilities



Household Waste Recycling Centres (HWRCs)

There will be a major overhaul of the current network of HWRCs including proposed new sites and upgraded facilities, many of which will be 'split level'.

There will also be four public education centres at Raikes Lane, Bolton; Bredbury Parkway, Stockport; Pilsworth, Bury; and Longley Lane, Manchester.

Materials Recovery Facility (MRF)

A brand new 'clean' MRF, located at Longley Lane in Manchester, will sort cans, glass and plastic bottles from the kerbside collections across the Greater Manchester area.



Mechanical Biological Treatment (MBT) and Anaerobic Digestion (AD)

New MBT/AD plants will replace the existing treatment facilities at Longley Lane and Reliance Street (Manchester), Cobden Street (Salford), Bredbury Parkway, (Stockport) and Arkwright Street, (Oldham), (MBT with no AD).

Refuse Derived Fuel (RDF)

Approximately 275,000 tonnes of High Calorific Value Refuse Derived Fuel (HCV-RDF) from the MBT/AD process will travel by rail to a Combined Heat and Power (CHP) facility at Ineos Chlor in Runcorn, Cheshire.

Energy from Waste (EfW)

The EfW facility at Bolton will continue to operate.

In-Vessel Composting (IVC)

Four new enclosed IVC facilities will treat kitchen and garden waste at: Bredbury Parkway, Stockport; Waithlands, Rochdale; Salford Road, Bolton; and Trafford.

Green Waste Shredding (GWS)

The facilities at Every Street, Bury and at Longley Lane, Manchester will be upgraded and improved.

Transfer Loading Stations (TLS)

These will be upgraded - or new ones created - at: Raikes Lane, Bolton; Every Street, Bury; Arkwright Street, Oldham; Waithlands, Rochdale; Cobden Street, Salford; Bayley Street, Tameside; and Bredbury Parkway, Stockport.

For more information, please contact:

Jennifer Perkins | Communications Manager | Viridor Laing (Greater Manchester) Ltd.
Hurstwood Court | Unit 4 - Raikes Lane Industrial Estate | Bolton | BL3 2NP
T: 01204 374 220 | M: 07795 158 558 | E: jennifer.perkins@viridor-laing.co.uk