

PAPER RECYCLING - NEWSPAPERS/MAGAZINES

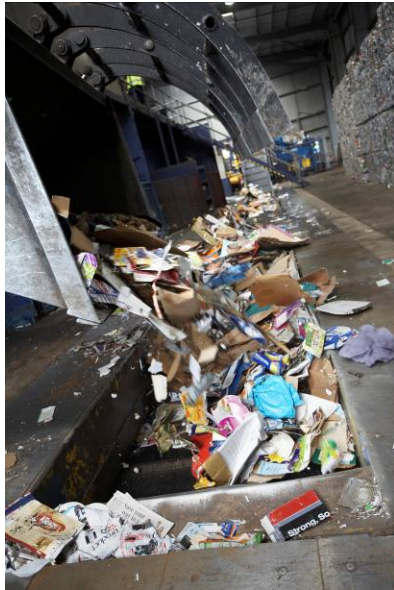
1. **Collection:** Across Greater Manchester paper and card are generally collected mixed together but separately from other recyclables.
2. **Delivery:** Mixed paper and card is taken to the nearest Transfer Loading Station (TLS), which is a large undercover storage facility.



3. **Storage:** Here the mixed paper and card is stored until it is ready to be transported in large quantities either directly to a paper mill or for baling.



4. **Baling:** Some of the mixed paper and card is loaded onto large conveyor belts to be baled.



5. **Compressing:** It is then compressed using special machinery into bales.



6. **Reprocessing:** The bales are then sent to a paper mill for reprocessing into new card or paper products, including newspapers, magazines, tissues and toilet paper.

