

# Recycle your plastic bottles

Recycle them all – the ones in the kitchen, the bathroom and under the sink.

The only plastics your council can collect are plastic bottles.



# Why recycle?

**A** It reduces the rubbish we send to landfill sites

**B** It saves energy and raw materials

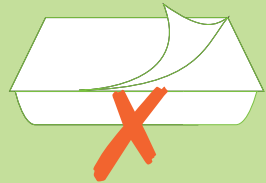
**C** It's an easy way to help tackle climate change

# Which plastic can we recycle?

It is very important to make sure you put only the right sort of plastic in your recycling container. Councils in Greater Manchester can only take plastic bottles for recycling.



# Some of the plastic we can't recycle



Plastic bags

Food trays

Yoghurt pots

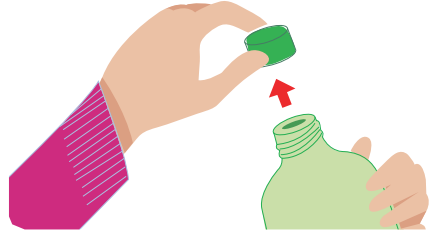
Plastic film

# How do I recycle plastic bottles?

**Recycling your plastic bottles is easy! Your council will collect all your plastic bottles, so all you need to do is:**

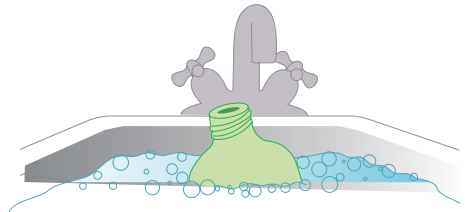
## **Remove the lids -**

Unfortunately your council cannot recycle lids because they are usually made from different plastic, so they cannot be recycled successfully with your plastic bottles at the moment.



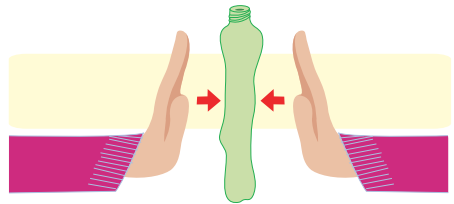
## **Rinse them -**

Rinsing helps to remove the last of the contents from your plastic bottles. Why not reuse your old washing-up water to swill them out?



## **Squash them -**

This will help to create more space in your recycling container.



Then pop them into your recycling container and leave it out for collection. Your council will do the rest!

**Thank you Greater Manchester!** You are recycling more than ever before and by doing so are helping to keep Greater Manchester green.

# Frequently asked questions

## What happens to my plastic bottles after they have been collected?

Your plastic bottles, along with the other materials you recycle, are sent to be sorted and separated. Your plastic bottles are then sent to be re-processed into new items. Plastic bottles can become more plastic bottles, or they can become other things like park benches, fleeces or water-butts.

## Why can't I put other types of plastic in my recycling container with my bottles?

Unfortunately, lids, cling-film, yoghurt pots, food trays, plastic bags and other plastic containers are made from different or lower quality plastic, so they cannot be recycled successfully with your bottles.



 **recycle** for Greater Manchester

To find out more about recycling your waste in Greater Manchester, visit:

**[www.reycleforgreatermanchester.com](http://www.reycleforgreatermanchester.com)**